

NOTE: USE 3/16"/FT. SLOPE  
IN CURB AND GUTTER FROM  
STA. 7+79.50 TO PROPOSED  
STRUCTURE OVER SULPHUR  
BROOK.

200  
SOUTHGATE ACRES  
SUBDIVISION No.7  
P.V. 19 PAGE 46

PROPOSED PRECAST  
CONCRETE 3-SIDED  
BRIDGE DETAILS  
ON SHT. No.

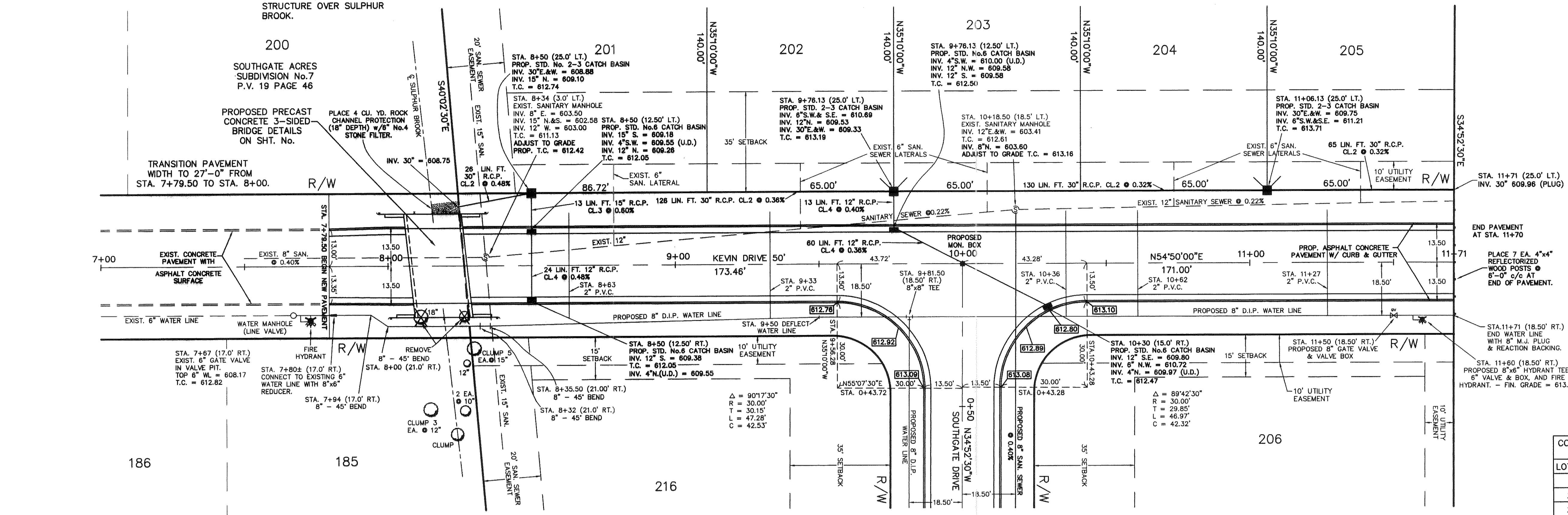
TRANSITION PAVEMENT  
WIDTH TO 27'-0" FROM  
STA. 7+79.50 TO STA. 8+00.

SCALE 1"=20'

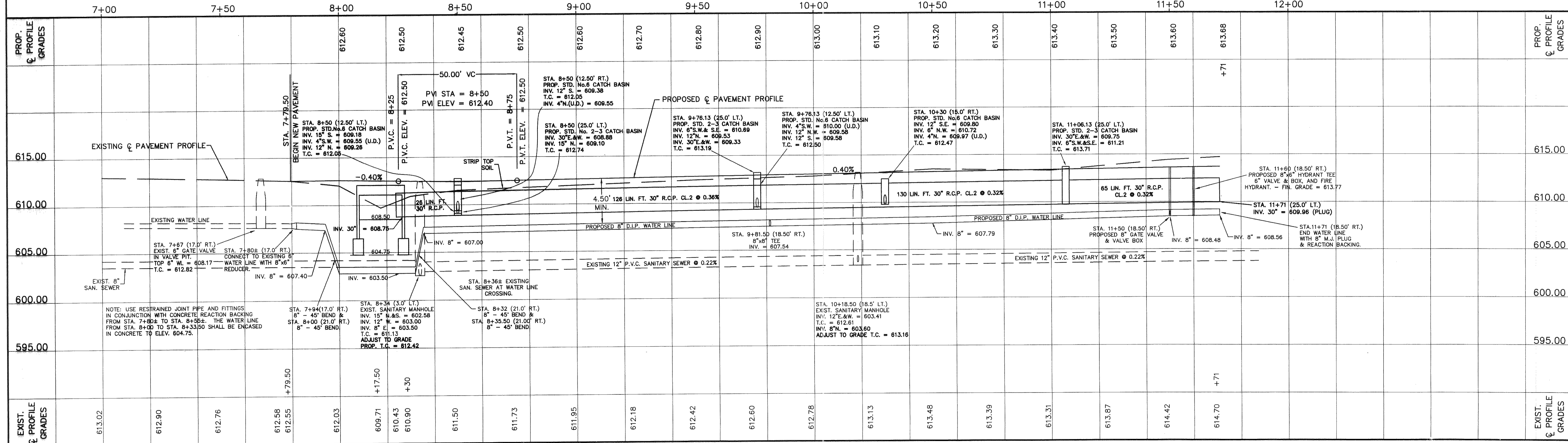
FUTURE WINDAMERE  
SUBDIVISION

KEVIN DRIVE  
CONDUIT FOR WATER SERVICE CONNECTIONS  
2" P.V.C. SCH. 40 PIPE

LOT NO.	STATION	LENGTH
201	8+63	35 LIN. FT.
202	9+33	35 LIN. FT.
203	10+36	35 LIN. FT.
204	10+62	35 LIN. FT.
205	11+27	35 LIN. FT.
		175 LIN. FT. TOTAL



B.M. - TOP OF SOUTH FLANGE  
BOLT ON FIRE HYDRANT  
AT STA. 7+73 (18.90' RT.)  
ELEV. = 614.62



SOFTDESK DWG: C:\CADD\MARK\PROJECTS\BC\BC-01\BC01-03.DWG BY: MAW