

NOTE: USE 3/16" FT. SLOPE
IN CURB AND GUTTER FROM
STA. 7+79.50 TO PROPOSED
STRUCTURE OVER SULPHUR
BROOK.

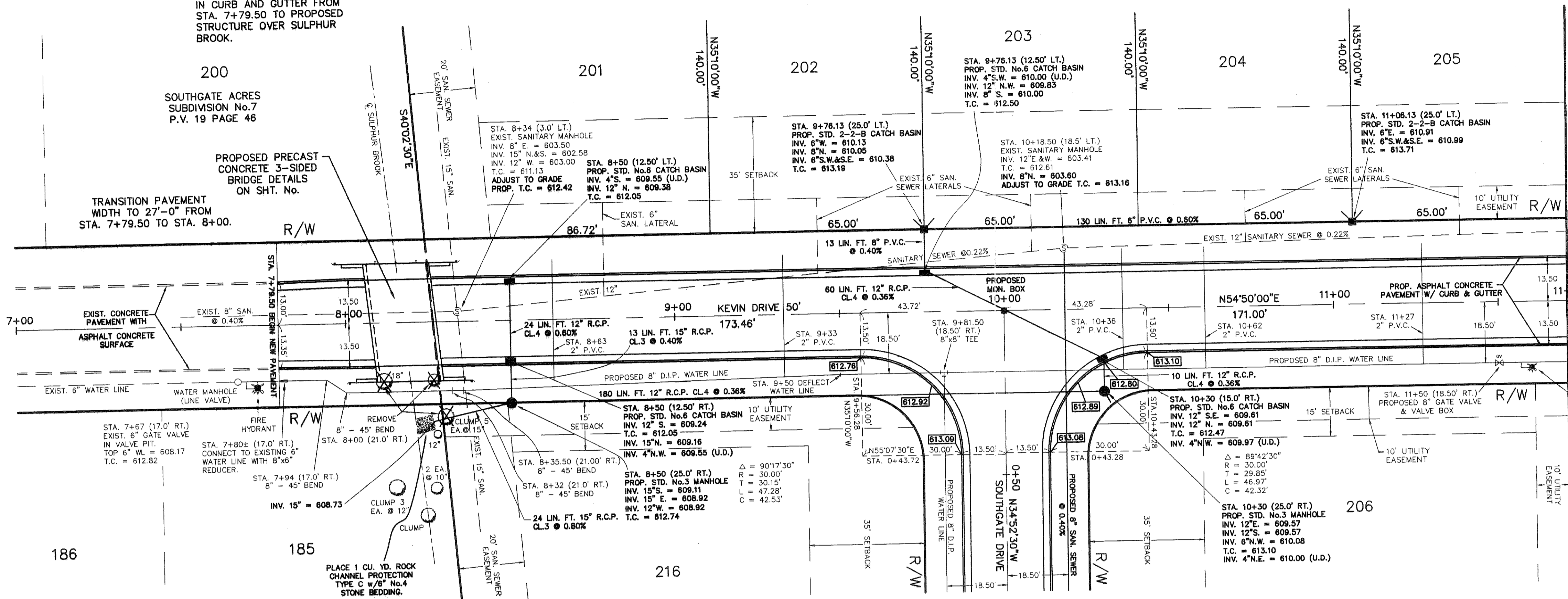
SOUTHGATE ACRES
SUBDIVISION No.7
P.V. 19 PAGE 46

PROPOSED PRECAST
CONCRETE 3-SIDED
BRIDGE DETAILS
ON SHT. No.

TRANSITION PAVEMENT
WIDTH TO 27'-0" FROM
STA. 7+79.50 TO STA. 8+00.

SCALE 1" = 20'

FUTURE WINDAMERE
SUBDIVISION



KEVIN DRIVE
CONDUIT FOR WATER SERVICE CONNECTIONS
2" P.V.C. SCH. 40 PIPE

LOT NO.	STATION	LENGTH
201	8+63	35 LIN. FT.
202	9+33	35 LIN. FT.
203	10+36	35 LIN. FT.
204	10+62	35 LIN. FT.
205	11+27	35 LIN. FT.
		175 LIN. FT. TOTAL

B.M. - TOP OF SOUTH FLANGE
BOLT ON FIRE HYDRANT
AT STA. 7+73 (18.90' RT.)
ELEV. = 614.82

