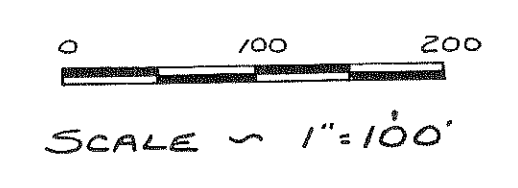
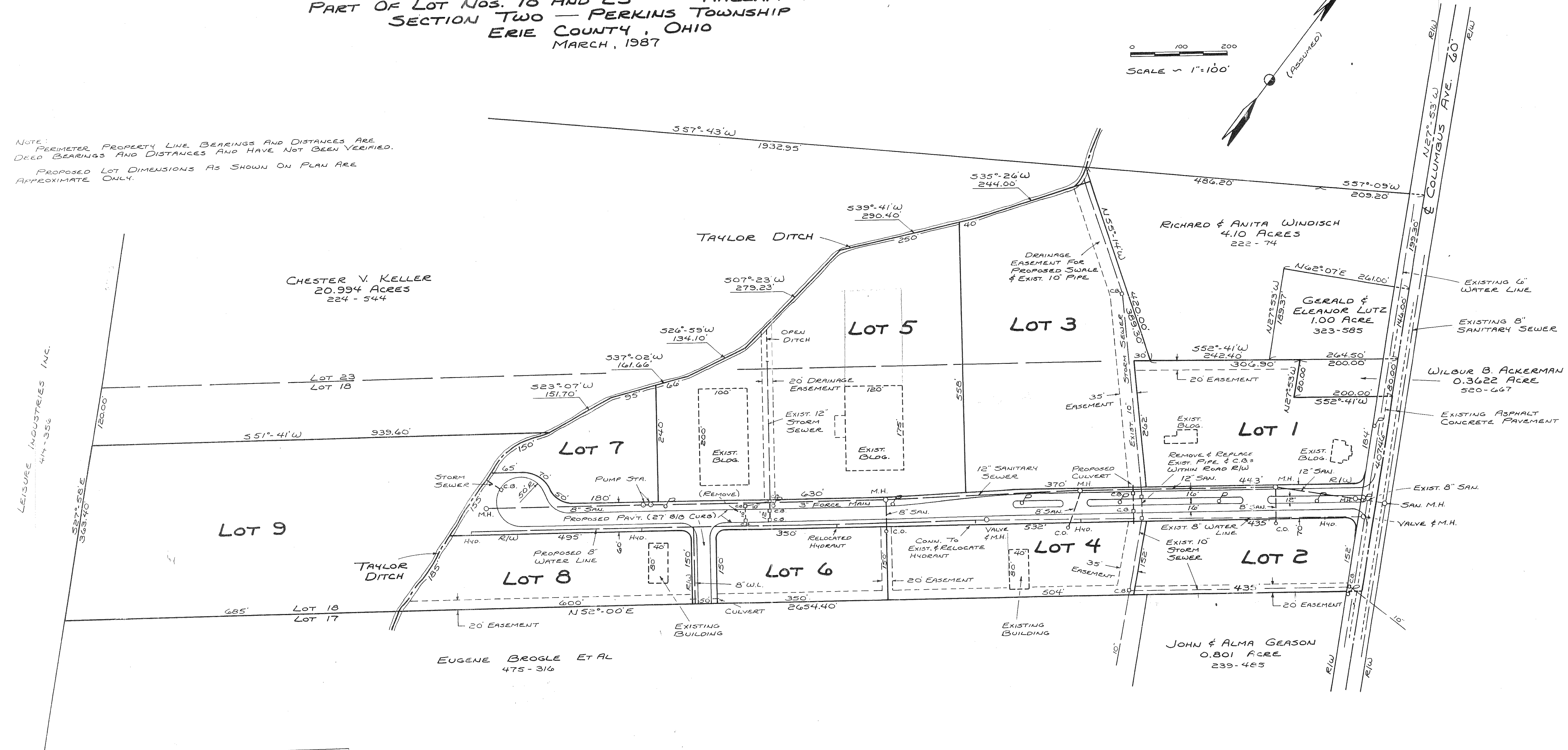


**PRELIMINARY PLAN
PERKINS INDUSTRIAL PARK**
PART OF LOT NOS. 18 AND 23 — HALLAM TRACT
SECTION TWO — PERKINS TOWNSHIP
ERIE COUNTY, OHIO
MARCH, 1987



NOTE: PERIMETER PROPERTY LINE BEARINGS AND DISTANCES ARE DEED BEARINGS AND DISTANCES AND HAVE NOT BEEN VERIFIED. PROPOSED LOT DIMENSIONS AS SHOWN ON PLAN ARE APPROXIMATE ONLY.



TABULATION		
LOT NO.	AREA	PROPOSED USE
1	2.55 AC.	OFFICE - COMMERCIAL
2	1.50 AC.	OFFICE - COMMERCIAL
3	4.75 AC.	INDUSTRIAL - WAREHOUSE
4	1.80 AC.	OFFICE - INDUSTRIAL
5	6.10 AC.	INDUSTRIAL - WAREHOUSE
6	1.20 AC.	OFFICE - INDUSTRIAL
7	1.20 AC.	INDUSTRIAL - WAREHOUSE
8	1.90 AC.	INDUSTRIAL - WAREHOUSE
9	6.50 AC.	MINIWAREHOUSE

PRESENT ZONING CLASSIFICATION IS I-2, HEAVY INDUSTRIAL

TOTAL AREA WITHIN PROPOSED INDUSTRIAL PARK INCLUDING ROAD RIGHT-OF-WAY IS 31.10 ACRES

OWNER AND DEVELOPER:
GILBERT W. DIDION
1432 TIFFIN AVENUE
SANDUSKY, OHIO

PLAN PREPARED BY:
ROBERT G. CREECH
REG. SURVEYOR # 5166
10700 S.R. 269 NORTH
BELLEVUE, OHIO