

# PRELIMINARY PLAN

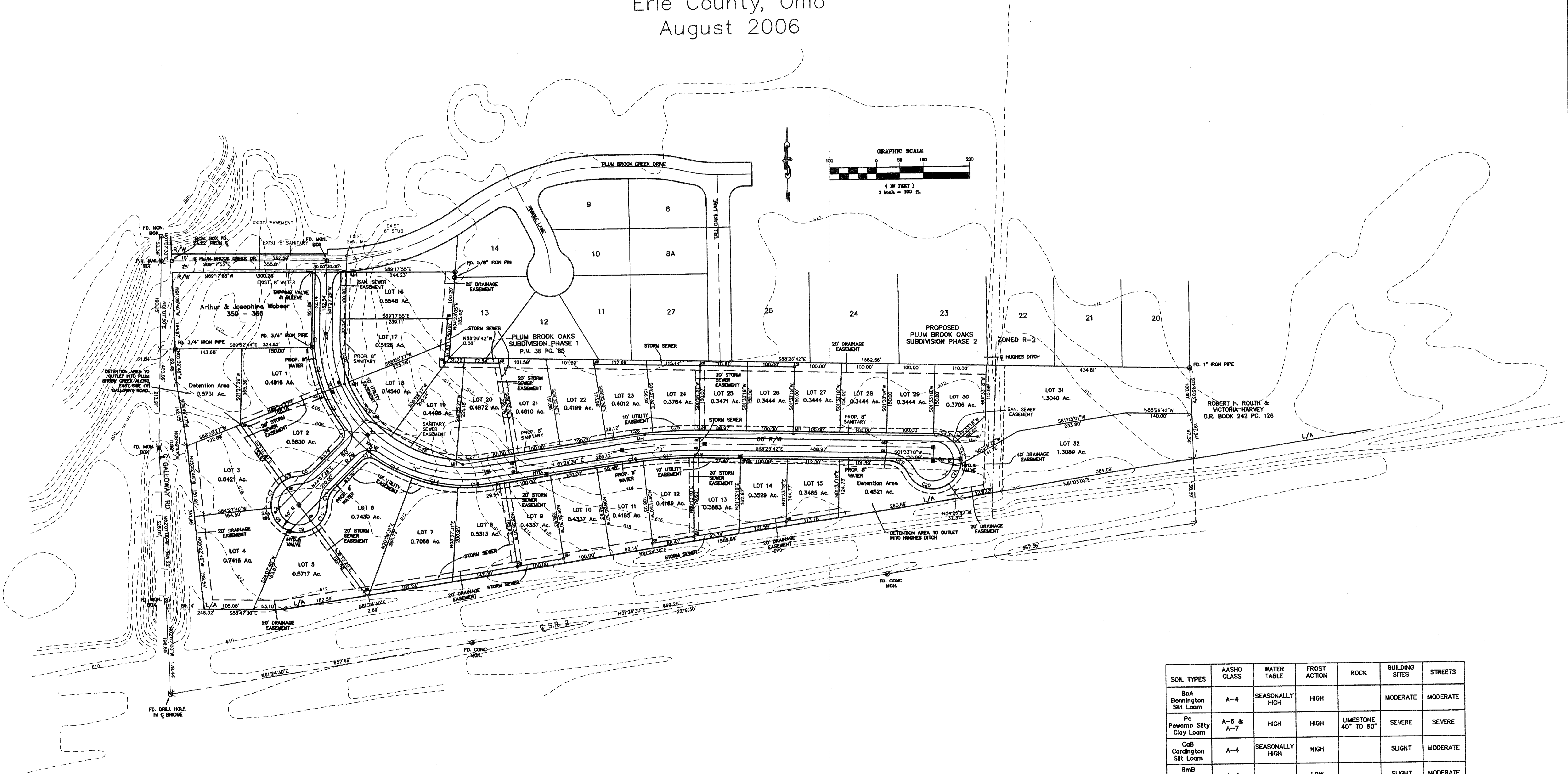
Part of Lot No. 22  
 Section 4 T6NR22W  
 Huron Township  
 Erie County, Ohio  
 August 2006

ALL PROPOSED IMPROVEMENTS TO CONFORM TO CURRENT REQUIREMENTS OF THE ERIE COUNTY ENGINEER'S DEPARTMENT, DEPARTMENT OF ENVIRONMENTAL SERVICES AND THE OHIO E.P.A.

PROPOSED PAVEMENT TO BE ASPHALT CONCRETE PAVEMENT WITH CONCRETE CURB AND GUTTER (27' B/B)

CUL-DE-SACS TO HAVE A 50' RADIUS TO BACK OF PAVED AREA.

ALL INTERSECTIONS TO HAVE 30' RADII.



**STORM DRAINAGE NARRATIVE**  
 THE STORM SEWER SYSTEM SHALL CONSIST OF DRAINAGE SWALES AND SUB-SURFACE STORM SEWERS. ALL LOTS WILL BE PROVIDED WITH A STORM SEWER OUTLET. THE STORM SEWERS WILL OUTLET INTO DETENTION AREAS DESIGNED FOR A 10 YEAR STORM. THE DETENTION AREAS WILL OUTLET INTO HUGHES DITCH AND PLUM BROOK CREEK. THE STORM SEWER SYSTEM TO CONFORM TO CURRENT SPECIFICATIONS OF THE STORM WATER MANAGEMENT RULES AND REGULATIONS INCLUDING ALL REQUIRED EROSION CONTROL PROCEDURES THROUGHOUT CONSTRUCTION.

SOIL TYPES	AASHO CLASS	WATER TABLE	FROST ACTION	ROCK	BUILDING SITES	STREETS
Ba Bennington Silt Loam	A-4	SEASONALLY HIGH	HIGH		MODERATE	MODERATE
Pc Powarno Silty Clay Loam	A-6 & A-7	HIGH	HIGH	LIMESTONE 40" TO 60"	SEVERE	SEVERE
CaB Cardington Silt Loam	A-4	SEASONALLY HIGH	HIGH		SLIGHT	MODERATE
BmB Belmore Loam	A-4		LOW		SLIGHT	MODERATE
A1A & A1B Allie Silty Clay Loam	A-6 & A-7	SEASONALLY HIGH	MODERATE	SHALE 20" TO 40"	MODERATE TO SEVERE	SEVERE
Fa Fries Silty Clay Loam	A-6	HIGH	HIGH	SHALE 20" TO 40"	SEVERE	SEVERE